



## *Technical Requirements for On-Premise Clients*

---

Developed on ControlManager™ v: 14+

### Client Requirements for ControlManager™ On-Premise

- Requirements for using ControlManager™
- Requirements for Web-Applications
- Requirements for Database(s)

## Content

1	Description.....	3
2	Requirements for using ControlManager™ .....	4
3	Requirements for Running Controlmanager™ Web-Applications.....	5
3.1	OS.....	5
3.2	Hardware Requirements .....	5
3.3	Required software/features .....	5
3.4	Required Server Settings .....	5
3.4.1	Installed Features .....	5
4	Requirements for ControlManager™ Database .....	7
4.1	OS.....	7
4.2	Hardware Requirements .....	7
4.3	Software .....	7
5	Additional Requirements.....	8
5.1	Active Directory Synchronization .....	8
5.1.1	ADFS.....	8
5.1.2	Azure AD .....	8
5.2	Mail integration .....	8
5.3	Additional Optional Requirements.....	8
5.3.1	Web Application Server .....	8
5.3.2	Database Server.....	8

## 1 Description

This guide has been created to let clients know what is required to use a ControlManager™ application located in client's own environment.

It will focus on only client changeable subject, and will describe the requirements ControlManager™ needs to give the client the best user experience.

As it is possible for the web applications and the database can run different servers, the requirements for each installation is written. If they are to be ran on the same server, the highest requirement for each subject, is to be considered required.

## Requirements for using ControlManager™

To use ControlManager™ on client computers, only a computer (OS independent) with the following installed, is needed:

- A Microsoft Edge, Mozilla Firefox or Google Chrome browser with the newest updates
- Adobe Acrobat Reader 7 or later

*NB! Only the Chromium based version of Microsoft Edge is supported. If you get a completely white screen in ControlManager, you are probably running the Internet Explorer based Microsoft Edge and should update Edge to the Chromium based version.*

## 2 Requirements for Running Controlmanager™ Web-Applications

### 2.1 OS

Oldest Microsoft Windows Server version still supported by Microsoft or newer

### 2.2 Hardware Requirements

The same as the desired version of Windows Server OS and IIS.

### 2.3 Required software/features

All software must be installed and running properly.

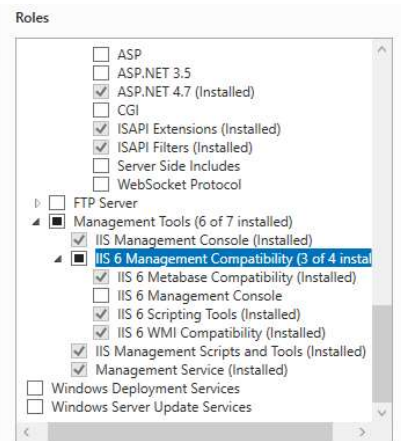
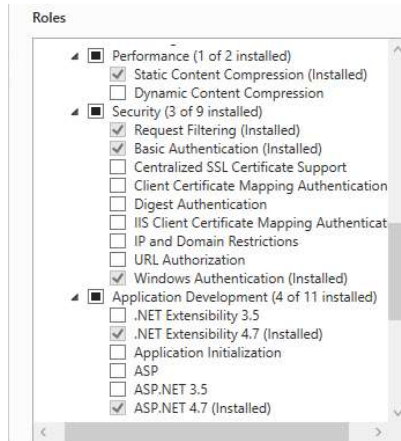
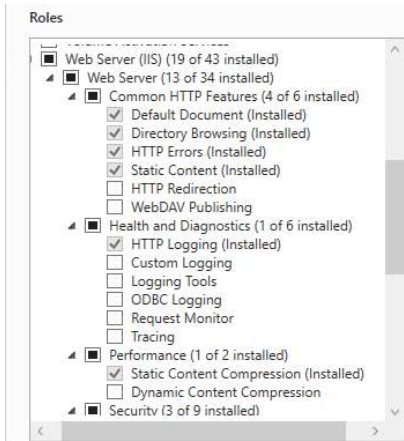
- IIS 7.0 or later
- .NET framework 4.7.2 or later
- ASP .NET service
- Microsoft .NET Core version 5.0.408 (this specific version)
- (Optional) Microsoft Edge, Mozilla Firefox or Google Chrome for testing on the server

### 2.4 Required Server Settings

#### 2.4.1 Installed Features

- Web server (IIS)
  - o Web Server
    - Common http Features
      - Default Document
      - Directory Browsing
      - HTTP Errors
      - Static Content
    - Health and Diagnostics
      - http Logging
    - Performance
      - Static Content
    - Security
      - Request Filtering
      - Basic Authentication
      - Windows Authentication
    - Application Development
      - .NET Extensibility 4.7
      - ASP.NET 4.7
      - ISAPI Extensions
      - ISAPI Filters
  - o Management Tools
    - IIS Management Console
    - IIS 6 Management Compatibility

- IIS 6 Metabase Compatibility
- IIS6 Scripting Tools
- IIS 6 WMI Compatibility
- IIS Management Script and Tools
- Management Service



## 3 Requirements for ControlManager™ Database

### 3.1 OS

Oldest Microsoft Windows Server version still supported by Microsoft or newer

### 3.2 Hardware Requirements

CPU – Minimum 1 core

RAM – 16GB or more recommended

Storage – Minimum 50GB recommended

*NB! If the application is running slow, more RAM is usually the best way to increase performance.*

### 3.3 Software

All software must be installed and running properly.

Microsoft SQL Server running in "Mixed Mode Authentication" (both SQL Express or paid license can be used)

*NB! We support Microsoft SQL Server versions that no more than 1 year past the mainstream support end date (as of February 2023, the oldest supported version is 2017)*

## 4 Additional Requirements

### 4.1 Active Directory Synchronization

#### 4.1.1 ADFS

The application must be installed on a domain joined server and the ControlManager™ application must be setup to synchronize with domain using a domain user. The user needs no privileges or any special setup to work, but we recommend setting the "Password never expires" setting for the user.

#### 4.1.2 Azure AD

To setup Azure synchronization an active Azure Domain is needed, and an "App Registration" for the back end and one for the portal application is needed (See Siscon's Azure setup guide).

### 4.2 Mail integration

To setup mail integration, the customer must add the mail server/relay in the ControlManager™ settings and make sure the server is installed as an authenticated mail sender.

### 4.3 Additional Optional Requirements

If Siscon is to handle the process of updating the application, the following rights are needed.

#### 4.3.1 Web Application Server

Siscon needs a user with "Administrator" rights on the server.

#### 4.3.2 Database Server

Siscon needs a user with the following rights on the database server:

- "dbCreator" - rights to create new databases (these are important in troubleshooting)
- "Alter any database" – Rights to modify databases (alternatively this can be added to the ControlManager™ database and new databases created by the Siscon user)
- "Alter any login" – Rights to change login (this is needed in order to edit the ControlManager™ integrated user)